



AREA GUIDE EXPERT ADVICE HOMES &amp; INTERIORS PROPERTY

# HOW MUCH ARE HOUSES IN LONDON'S MOST DESIRABLE VILLAGES?

Posted on 12th September 2018 | Tagged [Barnes](#) [Blackheath](#) [Chiswick](#) [Dulwich](#) [Marylebone](#)

London's urban villages have it all. Gorgeous wisteria-clad period homes, independent shops, artisan food stores, green space and excellent schools; it's no wonder there's a premium to pay to live in these vibrant community hubs. But how much are we talking?

Words: *Fiona Brandhorst*

Marylebone has become one of the most authentic central London villages, having been transformed over the last 10 years.

The area still hosts weekly markets including Cabbages and Frocks and the Sunday Farmers' Market, both of which draw in the locals, and it's not uncommon to see celebrities shopping in Waitrose or dining at Chiltern Firehouse.

'The Howard De Walden Estate and The Portman Estate have helped maintain its community feel by investing in the public areas and keeping a good mix of high quality and independent cafés, shops and restaurants,' says Thea Wellband, Buying Consultant at Knight Frank's The Buying Solution.

Savills is selling a fourth floor, two bedroom, lateral apartment overlooking the nearby [Bryanston Square](#) and a pretty communal garden to the rear for £2.5m.



Sloane Square and Belgravia are a stone's throw from Pimlico Road and Orange Square, the centre of Pimlico Village's adorable little triangle.

'It is a distinctive blend of shops, restaurants, weekly farmers' market; the Daylesford store and café is a real selling point as it brings a certain country charm to such a central location,' adds Wellband.

The area is also known for its galleries, antique and interiors showrooms as well as the renowned florist, [Nikki Tibbles Wild at Heart](#), all of which contribute to making Pimlico a quintessentially English village in the heart of the capital.

*Chiswick is a desirable riverside village with pretty Victorian*

## ***cottages, large Edwardian homes, classic Georgian properties and generous green space***

Hamptons International is selling a charming two bedroom mansion block apartment in **Sloane Gardens**, boasting a large roof terrace with Belgravia views, for £1.9m.

Chiswick is a desirable **riverside village** where pretty Victorian cottages, large Edwardian homes, classic Georgian properties and generous green space line up alongside the perfect mix of shops and restaurants.

KFH is selling a beautifully refurbished and extended four double bedroom Edwardian house in the Grove Park area of Chiswick within walking distance of all the shops and restaurants and Chiswick train station for £1,499,999.



**Barnes** is also one of the most sought after villages in the capital where stunning river views and a high concentration of independent shops, including The Ginger Pig butcher and Gail's Bakery, make up for the planes flying overhead as they approach Heathrow. A village green, duck pond and cosy pubs complete the tranquil picture, yet rail and Tube stations are nearby.

Jackson Stops is selling an elegant, three bedroom Grade II listed Georgian house on The Terrace, on one of the village's most historic waterfront streets, priced at £1.95m. Arranged over three floors, it's perfectly proportioned with a first floor drawing room and rare off-street parking to the front.

Further south of the river, **Dulwich Village** oozes character and cultural activities with the renowned picture gallery and acres of park with its many festivals, just yards from the independent shops, cafés and boutique hotel.

The infant and junior schools have a village-only catchment area and Dulwich College has a world famous reputation. KFH is selling a beautifully presented semi-detached, four bedroom family home on a private residential road for £1.545m.



Blackheath is one of London's prettiest and most welcoming villages. 'It has picture postcard good looks and old school charm by the bucket load,' says KFH's Blackheath sales manager Patricia Irwin-Brown.

The focal point is the historic heath, which dates back to the Middle Ages and is overlooked by magnificent Georgian and Victorian houses. A charming florist, baker, greengrocer and

butcher bump up against high street boutiques and home stores.'

Residents can be at work in the City or Canary Wharf in less than half an hour by train. KFH is selling a studio with magnificent views over the heath for £299,995.

Just down the road on Greenwich Peninsula, Upper Riverside is a brand new village-like community hosting an annual fête and benefiting from 48 acres of shared green space, roof top terraces and amenities including the P5K, a trail that will trace the riverfront before winding through the neighbourhood restaurants, cool bars and cafés.

Richard Margree, Chief Executive of the developer Knight Dragon, says: 'Upper Riverside is a community within a community; a world-class waterfront neighbourhood which will become a beautiful, modern place to live unlike anywhere else in London.'

The 126 one, two and three-bedroom apartments, lofts and penthouses at No3 Upper Riverside, designed by Studio Ashby, start at £525,000.

Receive the **weekly** The Resident newsletter directly to your **inbox**

Subscribe

[Our Privacy Policy \(https://www.archant.co.uk/articles/privacy-policy/\)](https://www.archant.co.uk/articles/privacy-policy/)

## Sponsored

Recommended by



### Rich List: Top 25 Richest UK Families

Investing.com



### 11 magical places to take kids before they grow up

Familytraveller.com



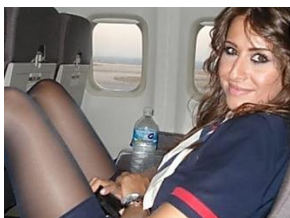
### Who Is the Richest Member of UK's Royal Family?

Investing.com



### Can You Pass This Very British Food Quiz?

HowStuffWorks



### Things Stewardesses Notice About Passengers In 3 Seconds

PostFun



### 19 Haircuts for Older Women (Summer 2019 Edition)

CelebsPulse



### 20 Photos Taken In Iran That Will Destroy Your Stereotypes

CelebsPulse



### Family meals under £5

NETMUMS



### Who Is the Richest Women in the UK?

Investing.com